

World Class Road Marking, Surfacing and Repair Solutions

Hitex International Group are a leading solutions provider of road safety markings, road surfacing, road repair systems and decorative surface treatments.

The group brings together four companies, each an established market leader, and experts in contracting services, material and equipment manufacture, and product development.

Through shared industry expertise and resources, we develop integrated solutions for a wide range of road infrastructure

projects. Hitex International Group places innovation at the core of our business, enabling us to deliver the service demanded by our partners and clients and to meet the evolving challenges of the global road network.

Speed restriction zones A new approach

Change your thinking on speed restriction zones with a totally original solution from Hitex International Group

Our unique recessed thermoplastic roundel will not break off, fade or wear out

Hitex International Group
Cloister Way, Ellesmere Port, Cheshire, CH65 4EL UK

TELEPHONE +44 (0)151 355 4100

EMAIL info@hitexinternational.com

WEBSITE www.hitexinternational.com

hitexinternational.com

Recessed TexPrint thermoplastic roundels were developed by L&R Roadlines in collaboration with Hitex Traffic Safety Materials. The innovative design and installation process has been adopted as part of traffic safety engineering schemes by local authorities across the UK with outstanding results.

How it works

+ TexPrint embossed thermoplastic is applied to the existing surface before the chosen design is traced out. The excess material is removed ready for the thermoplastic.



+ Hitex HiBrite 100 white reflective thermoplastic is applied flush to the level of the surrounding TexPrint, creating a perfect bond.

The system is professionally installed by L&R Roadlines, part of Hitex International Group. For more information please visit www.hitexinternational.com

// We have used the TexPrint products throughout the City Centre in Coventry, and found the material to be durable but also achieves the aesthetics we were after for our high quality public realm schemes.

The flexibility of this product enabled us to provide intricate paving details, such as cobbled sett interpretations, in areas where there are high volumes of large vehicles where the previous traditional sett details were becoming maintenance issues.

We have found L&R Roadlines to be very competitive on tenders, flexible on timescales and the quality of work is very high. I'm sure we will continue to work with L&R Roadlines and recommend to others. //

Chris Young, Senior Project Manager, Coventry City Council

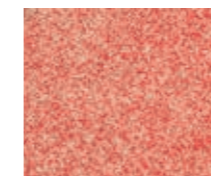
Advantages

- + No chipping, fading or wearing away of the road marking
- + No maintenance
- + High skid resistance
- + No prior excavation required
- + Highly reflective embedded roundel
- + 25% faster installation than traditional brick sets



Design options

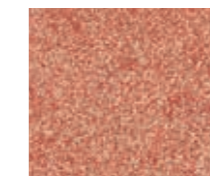
TexPrint COLOURS



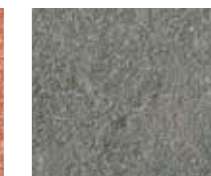
BRIGHT RED



BRICK RED



OXIDE RED

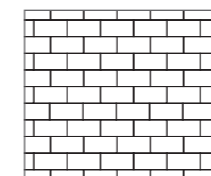


MID GREY

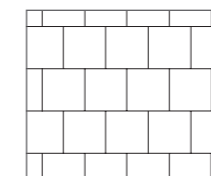


SLATE BLUE

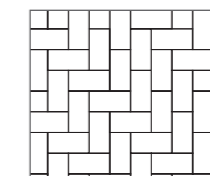
TexPrint PATTERNS



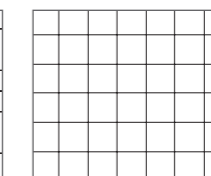
BRICK



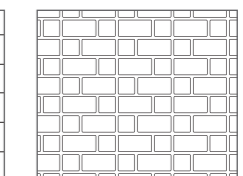
PAVING SLAB



90° HERRINGBONE



GRID



GRANITE SETT